

Архангельск (8182)63-90-72
Астана (7172)727-132
Астрахань (8512)99-46-04
Барнаул (3852)73-04-60
Белгород (4722)40-23-64
Брянск (4832)59-03-52
Владивосток (423)249-28-31
Волгоград (844)278-03-48
Вологда (8172)26-41-59
Воронеж (473)204-51-73
Екатеринбург (343)384-55-89
Иваново (4932)77-34-06

Ижевск (3412)26-03-58
Иркутск (395)279-98-46
Казань (843)206-01-48
Калининград (4012)72-03-81
Калуга (4842)92-23-67
Кемерово (3842)65-04-62
Киров (8332)68-02-04
Краснодар (861)203-40-90
Красноярск (391)204-63-61
Курск (4712)77-13-04
Липецк (4742)52-20-81

Магнитогорск (3519)55-03-13
Москва (495)268-04-70
Мурманск (8152)59-64-93
Набережные Челны (8552)20-53-41
Нижний Новгород (831)429-08-12
Новокузнецк (3843)20-46-81
Новосибирск (383)227-86-73
Омск (3812)21-46-40
Орел (4862)44-53-42
Оренбург (3532)37-68-04
Пенза (8412)22-31-16

Пермь (342)205-81-47
Ростов-на-Дону (863)308-18-15
Рязань (4912)46-61-64
Самара (846)206-03-16
Санкт-Петербург (812)309-46-40
Саратов (845)249-38-78
Севастополь (8692)22-31-93
Симферополь (3652)67-13-56
Смоленск (4812)29-41-54
Сочи (862)225-72-31
Ставрополь (8652)20-65-13

Сургут (3462)77-98-35
Тверь (4822)63-31-35
Томск (3822)98-41-53
Тула (4872)74-02-29
Тюмень (3452)66-21-18
Ульяновск (8422)24-23-59
Уфа (347)229-48-12
Хабаровск (4212)92-98-04
Челябинск (351)202-03-61
Череповец (8202)49-02-64
Ярославль (4852)69-52-93

Киргизия (996)312-96-26-47

Россия (495)268-04-70

Казахстан (772)734-952-31

<https://leitenberger.nt-rt.ru/> || bge@nt-rt.ru

CAPILLARIES

Cu - naked



Cu - naked

- flexible copper capillary - non coated
- diameter 1.0 mm
- usable up for all ranges between -80 and +380° C

Cu - PVC coated



Cu - PVC coated

- flexible copper capillary - PVC coated
- coat diameter 3.5 mm
- black or white
- usable up for ranges between -80 and +120° C

Cu - single cooper braided



Cu - single copper braided

- flexible copper capillary - single copper braided
- diameter 2.5 mm
- usable up for all ranges between -80 and +380° C

Cu - double copper braided



Cu - double copper braided

- flexible copper capillary double copper braided
- diameter 3.5 mm
- usable up for all ranges between -80 and +380° C

Stainless steel naked



Stainless steel - naked

- flexible stainless steel AISI 316 Ti
- capillary - non coated
- diameter 1.0 mm
- usable up for all ranges between -80 and +380° C

PROTECTION

Stainless steel - stainless steel protected



Stainless steel - stainless steel protected

- heavy duty execution
- flexible INOX capillary
- stainless steel protection spiral
- diameter 3.5 mm
- usable up for all ranges

Protection hose -PVC-



Protection hose - PVC

- heavy duty execution
- flexible PVC hose 6 x 1 mm
- usable up for all ranges

Protection hose - INOX jacket -

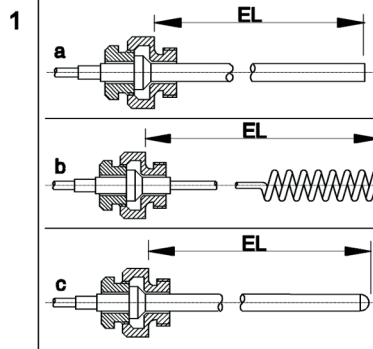


Protection hose - INOX jacket

- heavy duty execution
- flexible INOX hose
- diameter 5.8 mm
- usable up for all ranges

PROBES

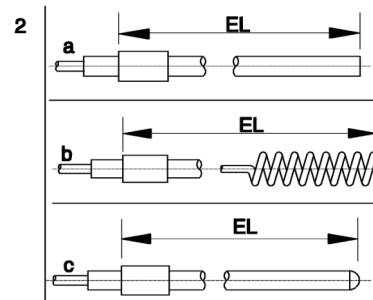
Typ 1



Type 1a, 1b, 1c

- loose double male adaptor
- standard thread sizes: 3/8 BSP or 1/2 BSP (sizes M 14 x 1,5, 3/4 BSP and 1 BSP are available on request)
- combineable with pocket no. 9
- 4, 5, 6, 7.8, 8, 8.5, 10 or 12 mm, Cu or 8, 10 oder 12 mm INOX
- typ 1b for gaseous medium
- 14, 16 or 18 mm, Cu

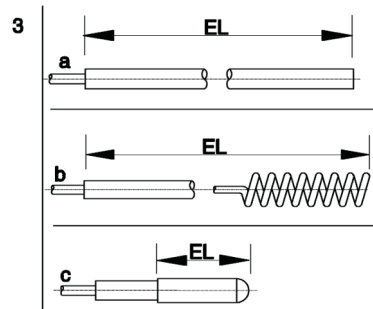
Typ 2



Type 2a, b, c

- no adaptor
- upper part of probe fitted with 8, 10, or 12 mm ferrule
- other diameters on request

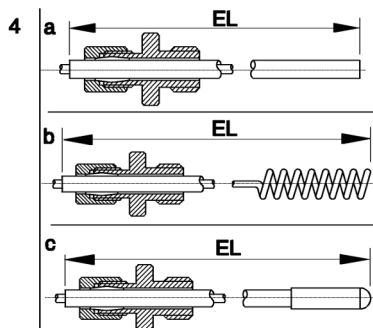
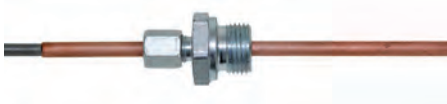
Typ 3



Type 3a, b, c

- plain - no adaptor - no ferrule
- type 3c - diameters 6 or 8.5 mm
- EL depending on range

Typ 4



Type 4a, b, c

- adaptor with compression olive fitting („sliding nut“)
- standard thread sizes 3/8 BSP or 1/2 BSP
- to be combined with pocket no. 9

The client can determinate at a later date the fitting length within the range of the total probe length.

The adaptor is screwed upon an annealed tube which can be bent behind the adaptor in conformity with the local requirements.

Архангельск (8182)63-90-72
 Астана (7172)727-132
 Астрахань (8512)99-46-04
 Барнаул (3852)73-04-60
 Белгород (4722)40-23-64
 Брянск (4832)59-03-52
 Владивосток (423)249-28-31
 Волгоград (844)278-03-48
 Вологда (8172)26-41-59
 Воронеж (473)204-51-73
 Екатеринбург (343)384-55-89
 Иваново (4932)77-34-06

Ижевск (3412)26-03-58
 Иркутск (395)279-98-46
 Казань (843)206-01-48
 Калининград (4012)72-03-81
 Калуга (4842)92-23-67
 Кемерово (3842)65-04-62
 Киров (8332)68-02-04
 Краснодар (861)203-40-90
 Красноярск (391)204-63-61
 Курск (4712)77-13-04
 Липецк (4742)52-20-81

Магнитогорск (3519)55-03-13
 Москва (495)268-04-70
 Мурманск (8152)59-64-93
 Набережные Челны (8552)20-53-41
 Нижний Новгород (831)429-08-12
 Новокузнецк (3843)20-46-81
 Новосибирск (383)227-86-73
 Омск (3812)21-46-40
 Орел (4862)44-53-42
 Оренбург (3532)37-68-04
 Пенза (8412)22-31-16

Пермь (342)205-81-47
 Ростов-на-Дону (863)308-18-15
 Рязань (4912)46-61-64
 Самара (846)206-03-16
 Санкт-Петербург (812)309-46-40
 Саратов (845)249-38-78
 Севастополь (8692)22-31-93
 Симферополь (3652)67-13-56
 Смоленск (4812)29-41-54
 Сочи (862)225-72-31
 Ставрополь (8652)20-65-13

Сургут (3462)77-98-35
 Тверь (4822)63-31-35
 Томск (3822)98-41-53
 Тула (4872)74-02-29
 Тюмень (3452)66-21-18
 Ульяновск (8422)24-23-59
 Уфа (347)229-48-12
 Хабаровск (4212)92-98-04
 Челябинск (351)202-03-61
 Череповец (8202)49-02-64
 Ярославль (4852)69-52-93

Киргизия (996)312-96-26-47

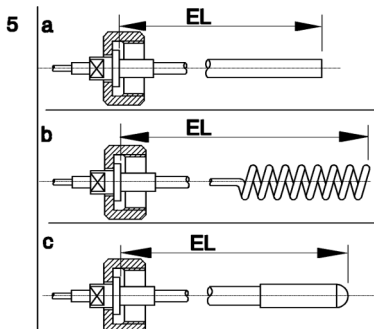
Россия (495)268-04-70

Казахстан (772)734-952-31

<https://leitenberger.nt-rt.ru/> || bge@nt-rt.ru

PROBES

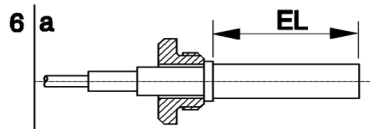
Typ 5



Typ 5a, b, c

- union nut, standard 1/2 BSP

Typ 6

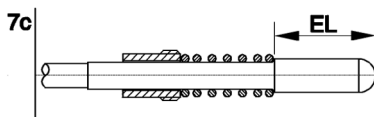


Typ 6a, b, c

- single adaptor
- recommender for use with solids

Types 1 - 6 (not 3c) also available in INOX!

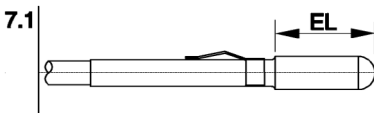
Typ 7c



Typ 7c

- knurled nut M 10x1, brass
- pressure spring
- diam. 8.5 mm (only in brass)
- to be fitted with pocket no. 8

Typ 7.1



Typ 7.1

- clip spring
- diam. 8.5 mm, brass
- to be fitted with pocket no. 8

LEGEND

Cu = copper
 EL = fitting length
 IG = internal thread
 AG = external thread
 SW = wrench size