

Syphons for pressure measuring instruments

Applications

- Syphons protect pressure measuring instruments from pulsations in the medium and from excessive heating
- Cooling element for fluids, gases and vapours in pressure measurement
- For direct mounting to the pressure connection of the pressure measuring instrument or to the shut-off device (stopcock or valve) mounted underneath

Special features

- Designs per DIN 16282 or to industrial standards
- Permissible temperatures to 400 °C
- Nominal pressures to 160 bar
- Materials: Steel (1.0039, 1.0345) and stainless steel (1.4571)



Syphons, DIN 16282, stainless steel

Fig. left: U-form, form B

Fig. right: Trumpet form, form D

Description

Syphons per DIN 16282 U-form, form B, and trumpet form, form D, have a welding connection for the pressure tapping on the process side and a threaded connection on the instrument side.

In the industrial standard versions, threaded connections are also available for the pressure tapping on the process side.

U-form syphons are intended for horizontal pressure tapping; trumpet-form syphons are intended for vertical pressure tapping.

Inside the syphon, condensate is collected, which prevents the ingress of hot media into the measuring instrument. We recommend filling the syphon with a cooling separating liquid before commissioning the pressure line.

Material of wetted parts	Permissible operating temperature up to °C	Max. working pressure ¹⁾ in bar
Steel 1.0039, 1.0345	120	160
	300	120
	400	104
Stainless steel 1.4571	120	160
	300	140
	400	131

1) With some industrial standard syphons the maximum working pressure is limited to 25 bar, see table on page 3

Options

- Other connection threads
- Special pipe for high temperatures and working pressures
- Material: Monel
- 1.4571 stainless steel, oil and grease-free for oxygen service
- 3.1 / 3.2 material test certificate
- Pipe connectors for pressure measuring instruments, see page 3

Архангельск (8182)63-90-72
Астана (7172)727-132
Астрахань (8512)99-46-04
Барнаул (3852)73-04-60
Белгород (4722)40-23-64
Брянск (4832)59-03-52
Владивосток (423)249-28-31
Волгоград (844)278-03-48
Вологда (8172)26-41-59
Воронеж (473)204-51-73
Екатеринбург (343)384-55-89
Иваново (4932)77-34-06

Ижевск (3412)26-03-58
Иркутск (395)279-98-46
Казань (843)206-01-48
Калининград (4012)72-03-81
Калуга (4842)92-23-67
Кемерово (3842)65-04-62
Киров (8332)68-02-04
Краснодар (861)203-40-90
Красноярск (391)204-63-61
Курск (4712)77-13-04
Липецк (4742)52-20-81

Магнитогорск (3519)55-03-13
Москва (495)268-04-70
Мурманск (8152)59-64-93
Набережные Челны (8552)20-53-41
Нижний Новгород (831)429-08-12
Новокузнецк (3843)20-46-81
Новосибирск (383)227-86-73
Омск (3812)21-46-40
Орел (4862)44-53-42
Оренбург (3532)37-68-04
Пенза (8412)22-31-16

Пермь (342)205-81-47
Ростов-на-Дону (863)308-18-15
Рязань (4912)46-61-64
Самара (846)206-03-16
Санкт-Петербург (812)309-46-40
Саратов (845)249-38-78
Севастополь (8692)22-31-93
Симферополь (3652)67-13-56
Смоленск (4812)29-41-54
Сочи (862)225-72-31
Ставрополь (8652)20-65-13

Сургут (3462)77-98-35
Тверь (4822)63-31-35
Томск (3822)98-41-53
Тула (4872)74-02-29
Тюмень (3452)66-21-18
Ульяновск (8422)24-23-59
Уфа (347)229-48-12
Хабаровск (4212)92-98-04
Челябинск (351)202-03-61
Череповец (8202)49-02-64
Ярославль (4852)69-52-93

Киргизия (996)312-96-26-47

Россия (495)268-04-70

Казахстан (772)734-952-31



1. Versions per DIN 16282

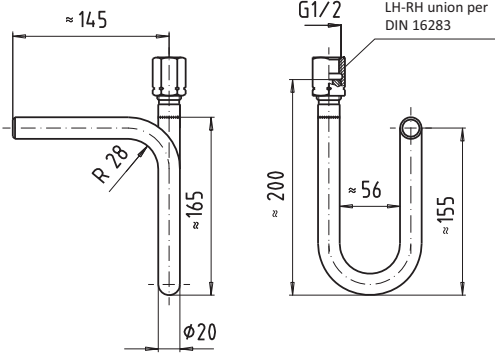
With welding connection on the pressure tapping side

Design	Material of wetted parts
U-form, form B Outlet ²⁾ : LH/RH union G 1/2	1.0345
	1.0345 with 3.1
	1.4571
	1.4571 with 3.1
Trumpet form, form D Outlet ²⁾ : LH/RH union G 1/2	1.0345
	1.0345 with 3.1
	1.4571
	1.4571 with 3.1

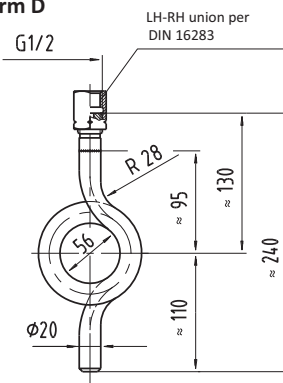
2) Instrument side

Dimensions in mm

U-form, form B



Trumpet form, form D



2. Industrial standard designs (similar to DIN 16282)

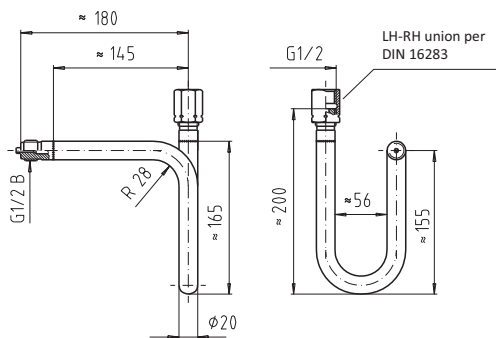
With G 1/2 B threaded connection on the pressure tapping side

Design	Material of wetted parts
U-form Outlet ²⁾ : LH/RH union G 1/2	1.0345
	1.0345 with 3.1
	1.4571
	1.4571 with 3.1
Trumpet form Outlet ²⁾ : LH/RH union G 1/2	1.0345
	1.0345 with 3.1
	1.4571
	1.4571 with 3.1 NACE

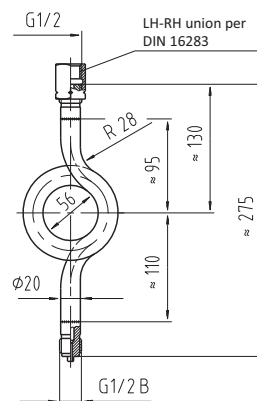
ide

Dimensions in mm


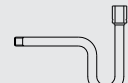


U-form



Trumpet form



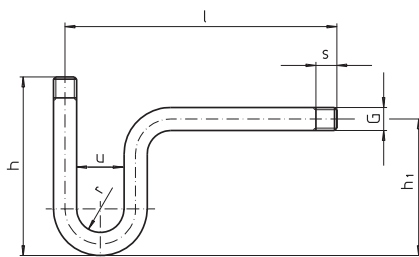
3. Industrial standard designs

Design	Con- nection thread G	Max. working pressure	Material of wet- ted parts	Dimensions in mm					
				D	h	h ₁	l	u	s
U-form 	G ½ B ⁴⁾	25 bar	1.0039	-	170	130	225	60	13
Inlet ¹⁾ and Outlet ²⁾ : Male thread	G ½ B ⁴⁾	25 bar	1.0345	-	170	130	225	56	20
U-form 	G ½ B ⁴⁾	25 bar	1.0345	-	205	130	225	56	20
Inlet ¹⁾ : G ½ B Outlet ²⁾ : LH/RH union G ½	G ½ B ⁵⁾	s. Tabelle S.1	1.0345	-	200	130	225	56	20
U-form 	G ½ B	s. Tabelle S.1	1.0345	-	200	130	-	56	-
Inlet ¹⁾ : without thread ³⁾ Outlet ²⁾ : LH/RH union G ½									
Trumpet form 	G ½ B ⁴⁾	25 bar	1.0039	60	240	120	-	-	13
Inlet ¹⁾ and Outlet ²⁾ : Male thread	G ½ B ⁴⁾	25 bar	1.0345	56	230	115	-	-	20

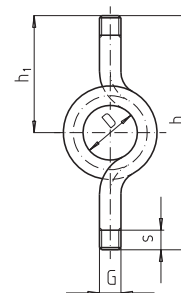
- 1) Process side
- 2) Instrument side
- 3) Prepared for welding
- 4) Thread machined directly onto pipe
- 5) Welded pressure connection

Dimensions in mm

U-form



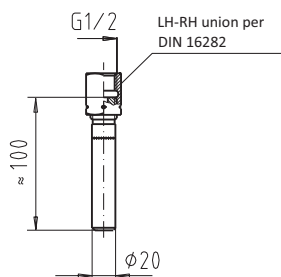
Trumpet form



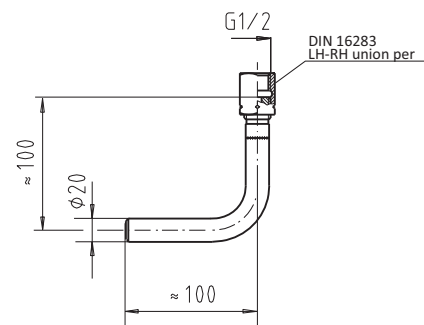
4. Pipe connectors for pressure measuring instruments

Welding connection on the pressure tapping side (outlet ²⁾: LH/RH union G ½)

Straight form



Angled form



Design	Material of wetted parts	Order number
Straight Form	1.0345	2243679
	1.4571	2112892

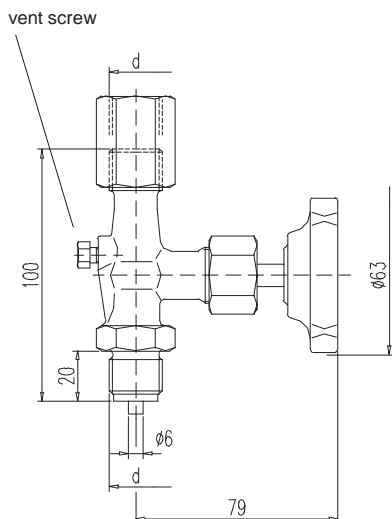
Design	Material of wetted parts
Angled form	1.0345
	1.4571

Pressure gauge Valves as per **DIN 16270**

Rel. 20180702

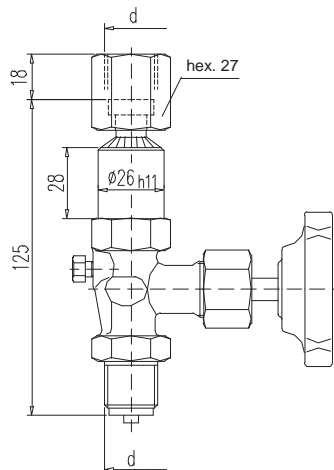
Design A

with adjusting nut
DIN 16 283



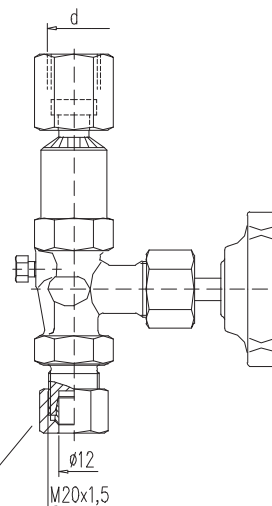
Design B

with swivel nut and shaft for
pressure gauge support



Design B - AS12

tube fitting
O. D. 12 mm
line S



PN ³⁾	Connection thread d	Material	Part no.		
			Design A	Design B	Design B-AS12
250 400 400	G 1/2	brass	003.4.160.0000.0	S004.16.020	S004.16.020.13
steel		003.4.161.0000.0	S004.16.120	S004.16.120.13	
st. st.		003.4.162.0000.0	S004.16.220	S004.16.220.13	
250 400 400	M 20x1,5	brass	S004.16.050	-	-
steel		S004.16.150	-	-	
st. st.		S004.16.250	-	-	

Components	Brass ¹⁾	Steel	Stainless steel ¹⁾
	DIN - Material Number		
Body ²⁾	brass	1.0460	1.4571
Valve stem	1.4104		1.4571
Needle tip	1.4104		1.4571
Packing	PTFE up to 200°C (graphite up to 250°C)		
Union nut	steel	stainless steel	
Adjusting nut	steel		stainless steel
Swivel nut	brass	steel	stainless steel
Vent screw	1.4571		
Handwheel	plastic		

Abbreviation acc. to DIN	Material	Temperature rating
10 Ms	brass	- 10 up to + 120°C
10 St	steel	- 10 up to + 120°C
20 St	stainless steel	- 20 up to + 200/250°C

- **Body:** brass: pressed part
steel / stainless steel: die-pressed part
- **Surface:** steel phosphatized
- Internal stem thread
- Stem with cold rolled surface and non-rotating needle tip

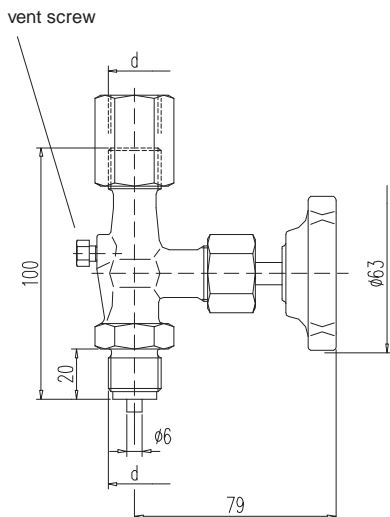
- 1) Can also be supplied for oxygen service.
Please notice order instruction B 3!
- 2) Available with inspection certificate 3.1.B acc. to EN 10 204
- 3) Valves with PN 640 on request



Pressure gauge Valves similar to **DIN 16270 - DVGW tested**

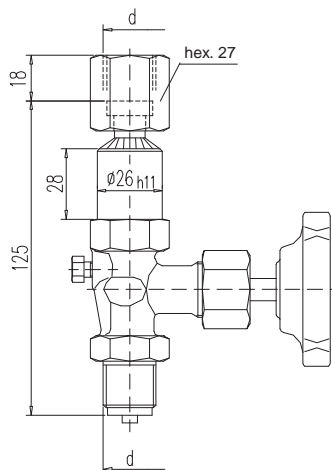
Design A

with adjusting nut
DIN 16 283

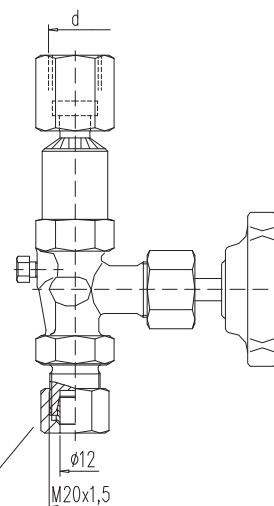


Design B

with swivel nut and shaft for
pressure gauge support



Design B - AS12



tube fitting
O. D. 12 mm
line S

D V G W - Registration	
DVGW-Register-No.	DG-4315BQ0226

PN	Connection thread d	Material	Part no.		
			Design A	Design B	Design B-AS12
100	G 1/2	brass steel st. st.	003.4.260.0000.0	S004.26.020	-
			003.4.261.0000.0	S004.26.120	S004.26.120.13
			003.4.262.0000.0	S004.26.220	S004.26.220.13

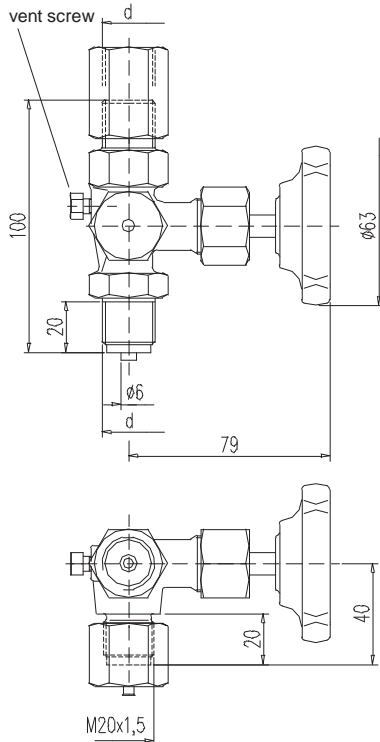
Components	Brass	Steel	Stainless steel
	DIN - Material Number		
Body	brass	1.0460	1.4571
Valve stem	1.4104		1.4571
Needle tip	1.4104		1.4571
O-rings	FPM (Viton®)		
O-ring retainer	brass		1.4571
Union nut	galv. steel	steel	stainless steel
Adjusting nut	brass	steel	stainless steel
Swivel nut	brass	steel	1.4571
Vent screw	1.4571		
Handwheel	plastic		

- **Body:** brass: pressed part
steel / stainless steel: die-pressed part
- **Surface:** steel phosphatized
- Internal stem thread
- Stem with colled rolled surface and non-rotating needle tip
- Max. operating pressure: 100 bar
Temperature: - 5°C up to + 60°C
- Basis of type examination: DVGW VP 308
- For all kinds of gas in accordance with DVGW-list number G 260
- Available with inspection certificate 3.1 acc. to EN 10 204

Pressure gauge Valves as per **DIN 16271, test stud M 20x1,5**

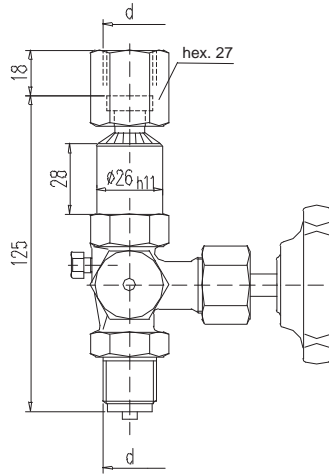
Design A

with adjusting nut
DIN 16 283

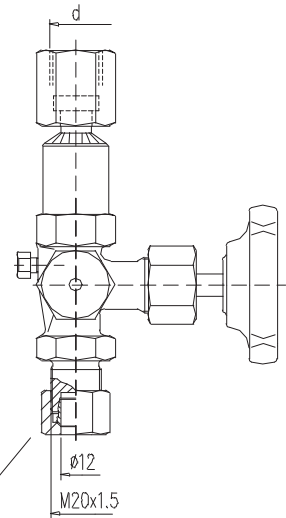


Design B

with swivel nut and shaft for
pressure gauge support



Design B - AS12



tube fitting
O. D. 12 mm
line S

PN ³⁾	Connection thread d	Material	Part no.		
			Design A	Design B	Design B-AS12
250 400 400	G 1/2	brass	003.4.170.0000.0	S004.17.020	S004.17.020.13
		steel	003.4.171.0000.0	S004.17.120	S004.17.120.13
		st. st.	003.4.172.0000.0	S004.17.220	S004.17.220.13
250 400 400	M 20x1,5	brass	S004.17.050	-	-
		steel	S004.17.150	-	-
		st. st.	S004.17.250	-	-

Components	Brass ¹⁾	Steel	Stainless steel ¹⁾
	DIN - Material Number		
Body ²⁾	brass	1.0460	1.4571
Valve stem	1.4104		1.4571
Needle tip	1.4104		1.4571
Packing	PTFE up to 200°C (graphite up to 250°C)		
Sealing cap	steel		stainless steel
Union nut	steel		stainless steel
Adjusting nut	steel		stainless steel
Swivel nut	brass	steel	stainless steel
Vent screw	1.4571		
Handwheel	plastic		

Abbreviation acc. to DIN	Material	Temperature rating
10 Ms	brass	- 10 up to + 120°C
10 St	steel	- 10 up to + 120°C
20 St	stainless steel	- 20 up to + 200/250°C

- Body: brass: pressed part
steel / stainless steel: die-pressed part
- Surface: steel phosphatized
- Internal stem thread
- Stem with cold rolled surface and non-rotating needle tip

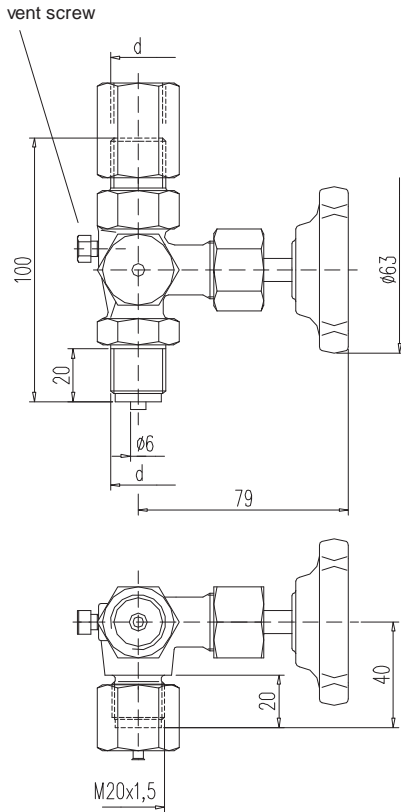
- 1) Can also be supplied for oxygen service. Please notice order instruction B 3!
- 2) Available with inspection certificate 3.1.B acc. to EN 10 204
- 3) Valves with PN 640 on request



Pressure gauge Valves similar **DIN 16271**, test stud M 20x1,5 - DVGW tested

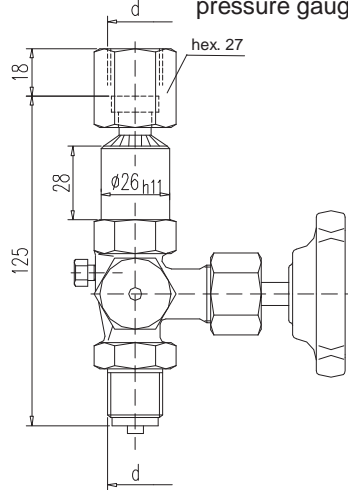
Design A

with adjusting nut
DIN 16 283

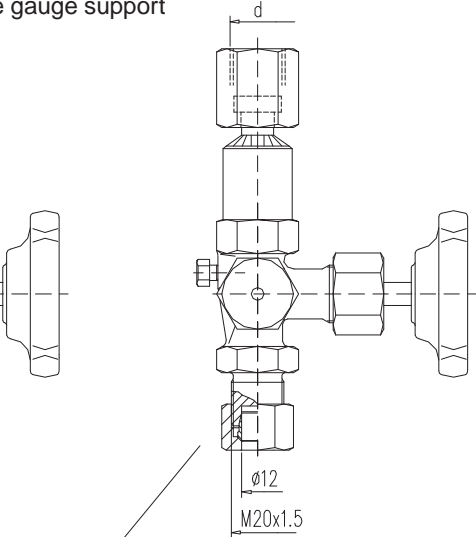


Design B

with swivel nut and shaft for
pressure gauge support



Design B - AS12



tube fitting
O. D. 12 mm
line S

D V G W - Registration

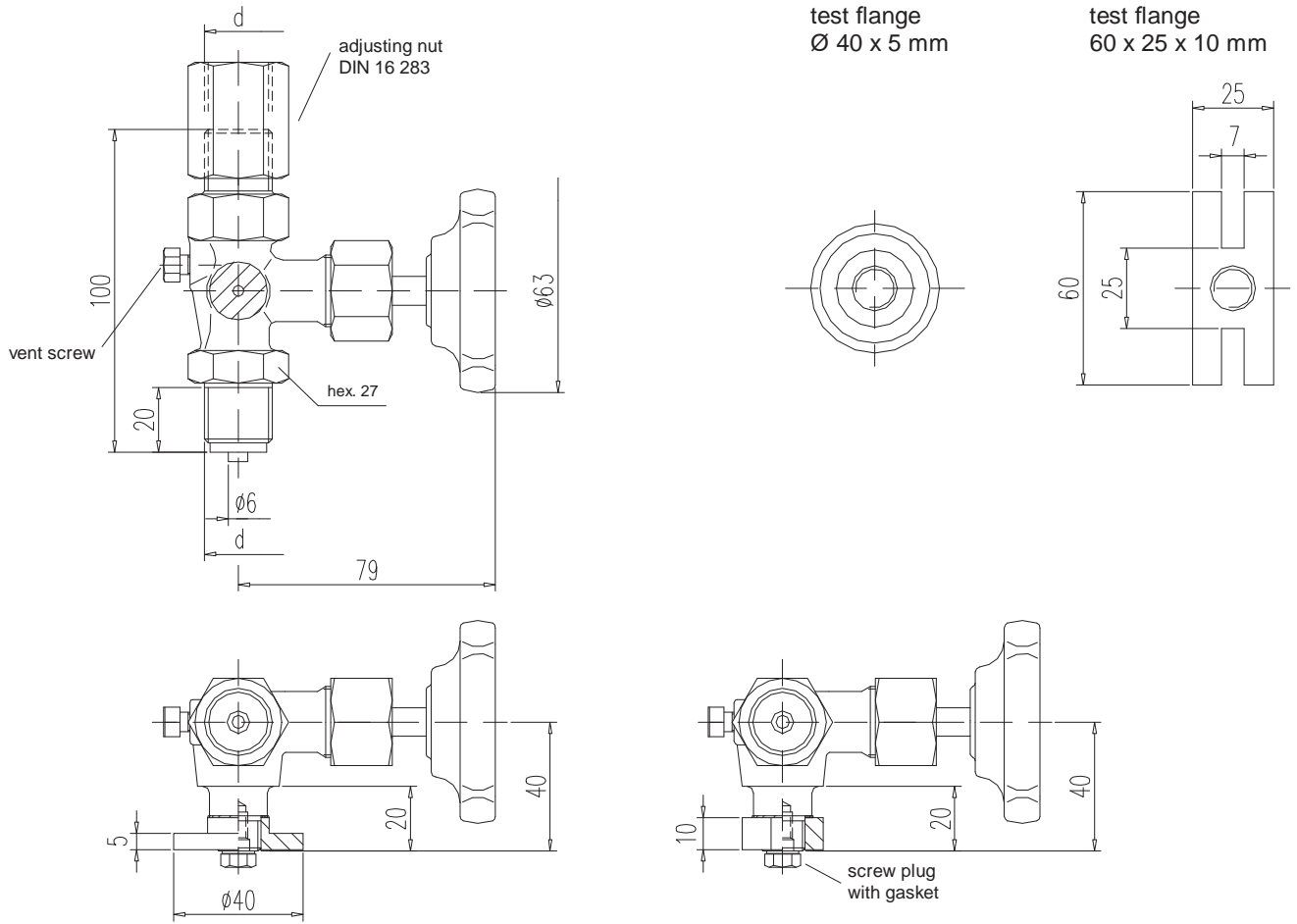
DVGW-Register-No.	DG-4315BQ0226
--------------------------	---------------

PN	Connection thread d	Material	Part no.		
			Design A	Design B	Design B-AS12
100	G 1/2	brass steel st. st.	S004.27.000 S004.27.100 S004.27.200	S004.27.020 S004.27.120 S004.27.220	- S004.27.120.13 S004.27.220.13

Components	Brass	Steel	Stainless steel
	DIN - Material Number		
Body	brass	1.0460	1.4571
Valve stem	1.4104		1.4571
Needle tip	1.4104		1.4571
O-rings	FPM (Viton®)		
O-ring retainer	brass		1.4571
Sealing cap	galv. steel	steel	stainless steel
Union nut	galv. steel	steel	stainless steel
Adjusting nut	brass	steel	stainless steel
Swivel nut	brass	steel	1.4571
Vent screw	1.4571		
Handwheel	plastic		

- **Body:** brass: pressed part
steel / stainless steel: die-pressed part
- **Surface:** steel phosphatized
- Internal stem thread
- Stem with colled rolled surface and non-rotating needle tip
- Max. operating pressure: 100 bar
Temperature: - 5°C bis + 60°C
- Basis of type examination: DVGW VP 308
- For all kinds of gas in accordance with DVGW-list number G 260
- Available with inspection certificate 3.1 acc. to EN 10 204

Pressure gauge Valves similar **DIN 16271, test flange**



PN	Connection thread d	Material	Part no. with test flange	
			Ø 40 x 5 mm	60 x 25 x 10 mm
250	G 1/2	brass steel st. st.	003.4.170.6000.0	003.4.170.7000.0
400			003.4.171.6000.0	003.4.171.7000.0
400			003.4.172.6000.0	003.4.172.7000.0

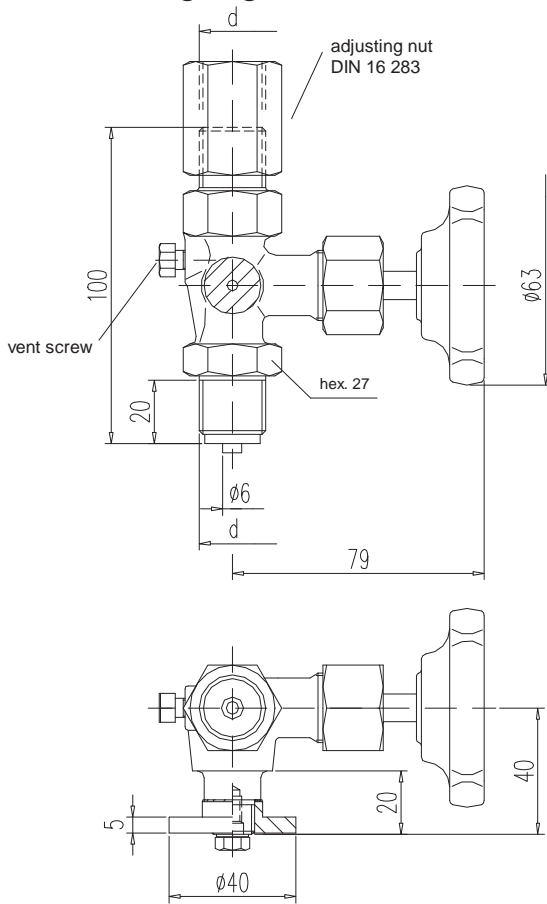
Components	Brass ¹⁾	Steel	Stainless steel ¹⁾
	DIN - Material Number		
Body ²⁾	brass	1.0460	1.4571
Flange	brass	steel	1.4571
Valve stem	1.4104		1.4571
Needle tip	1.4104		1.4571
Packing	PTFE up to 200°C		
Union nut	steel		stainless steel
Adjusting nut	steel		stainless steel
Screw plug	steel		A4-70
Vent screw	1.4571		
Handwheel	plastic		

- Body: brass: pressed part
steel / stainless steel: die-pressed part
- Surface: steel phosphatized
- Internal stem thread
- Stem with cold rolled surface and non-rotating needle tip

- 1) Can also be supplied for oxygen service. Please notice order instruction B 3!
- 2) Available with inspection certificate 3.1 acc. to EN 10 204

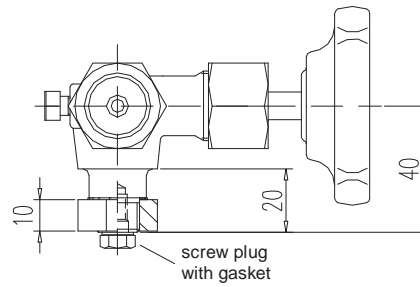
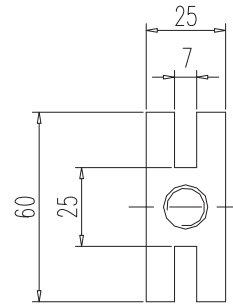
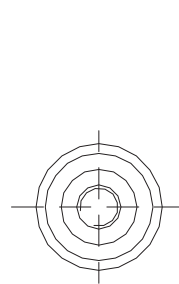


Pressure gauge Valves similar **DIN 16271, test flange - DVGW tested**



test flange
Ø 40 x 5 mm

test flange
60 x 25 x 10 mm



D V G W - Registration

DVGW-Register-No.

DG-4315BQ0226

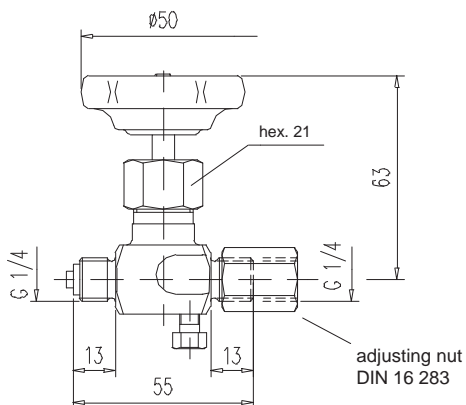
PN	Connection thread d	Material	Part no. with test flange	
			Ø 40 x 5 mm	60 x 25 x 10 mm
100	G 1/2	brass steel st. st.	S 004.27.060 S 004.27.160 S 004.27.260	S 004.27.070 S 004.27.170 S 004.27.270

Components	Brass	Steel	Stainless steel
	DIN - Material Number		
Body	brass	1.0460	1.4571
Flange	brass	steel	1.4571
Valve stem	1.4104		1.4571
Needle tip	1.4104		1.4571
O-rings	FPM (Viton®)		
O-ring retainer	brass		1.4571
Union nut	galv. steel	steel	stainless steel
Adjusting nut	brass	steel	stainless steel
Screw plug	steel		A4-70
Vent screw	1.4571		
Handwheel	plastic		

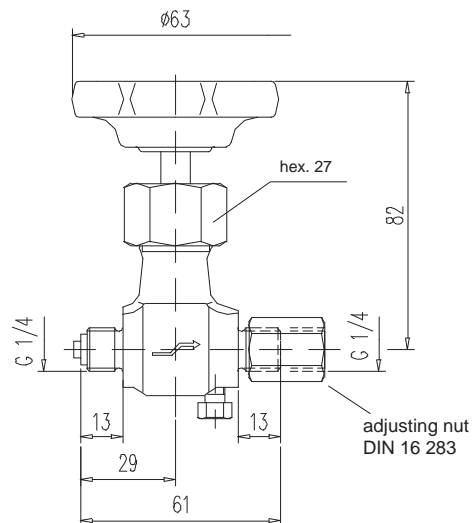
- **Body:** brass: pressed part
steel / stainless steel: die-pressed part
- **Surface:** steel phosphatized
- Internal stem thread
- Stem with cold rolled surface and non-rotating needle tip
- Max. operating pressure: 100 bar
Temperature: - 5°C up to + 60°C
- Basis of type examination: DVGW VP 308
- For all kinds of gas in accordance with DVGW-list number G 260
- Available with inspection certificate 3.1 acc. to EN 10 204

Pressure gauge Valves male/female swivel nut 1/4" BSP

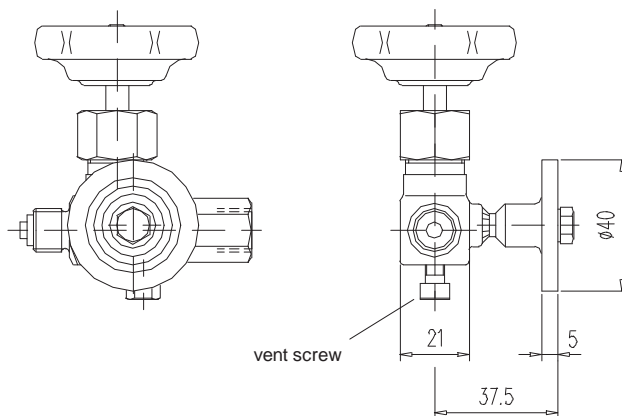
Type 1



Type 2



Type 3



PN	Type	Material	Temperature rating	Part no.
125	1	brass	- 10 up to + 120°C	003.4.120.0000.0
250	2	steel st. st.	- 10 up to + 120°C - 20 up to + 200°C	S004.13.130 S004.13.230
125	3	brass	- 10 up to + 120°C	S004.12.065

Components	Brass ¹⁾	Steel	Stainless steel ¹⁾
	DIN - Material Number		
Body ²⁾	brass	1.0460	1.4571
Valve stem	brass	1.4104	1.4571
Needle tip	brass	1.4104	1.4571
Packing	PTFE		
Union nut	brass	steel	stainless steel
Adjusting nut	brass	steel	stainless steel
Vent screw	1.4571		
Handwheel	plastic		

- Body: brass: pressed part
steel / stainless steel: die-pressed part
- Surface: steel phosphatized
- Internal stem thread

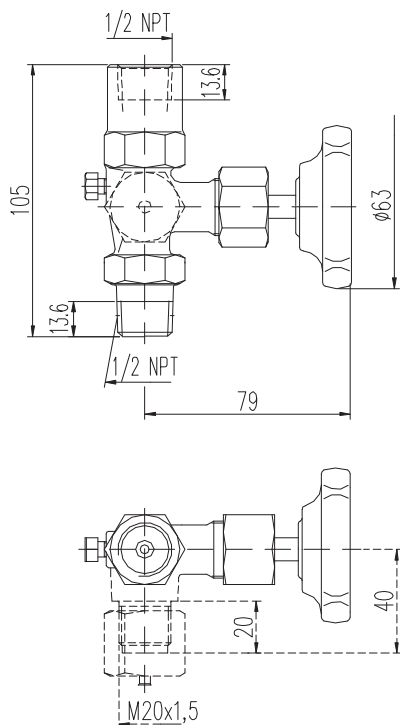
- 1) Can also be supplied for oxygen service. Please notice order instruction B 3!
- 2) Available with inspection certificate 3.1.B acc. to EN 10 204



Pressure gauge Valves **male/female 1/2" NPT**
 Pressure gauge Double Valves **male/female 1/2" NPT**

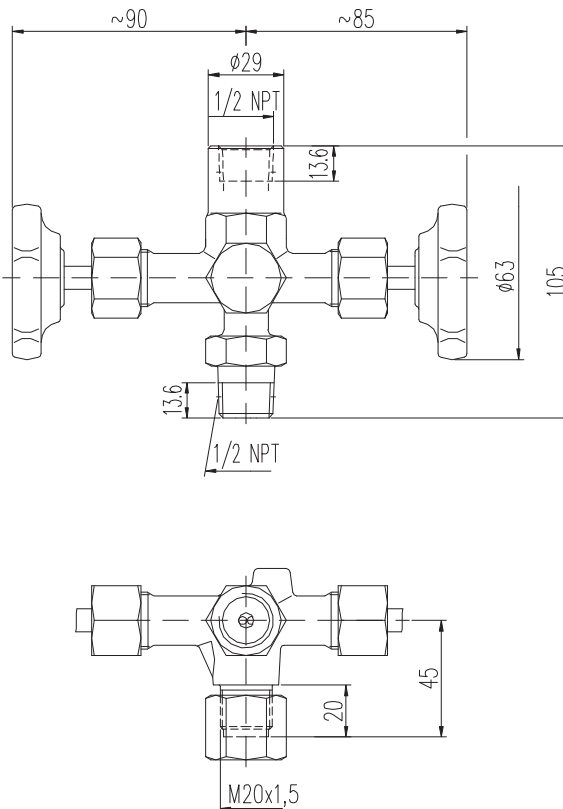
Type 1

Pressure gauge valve without alternative with test connection



Type 2

Double pressure gauge valve with test connection

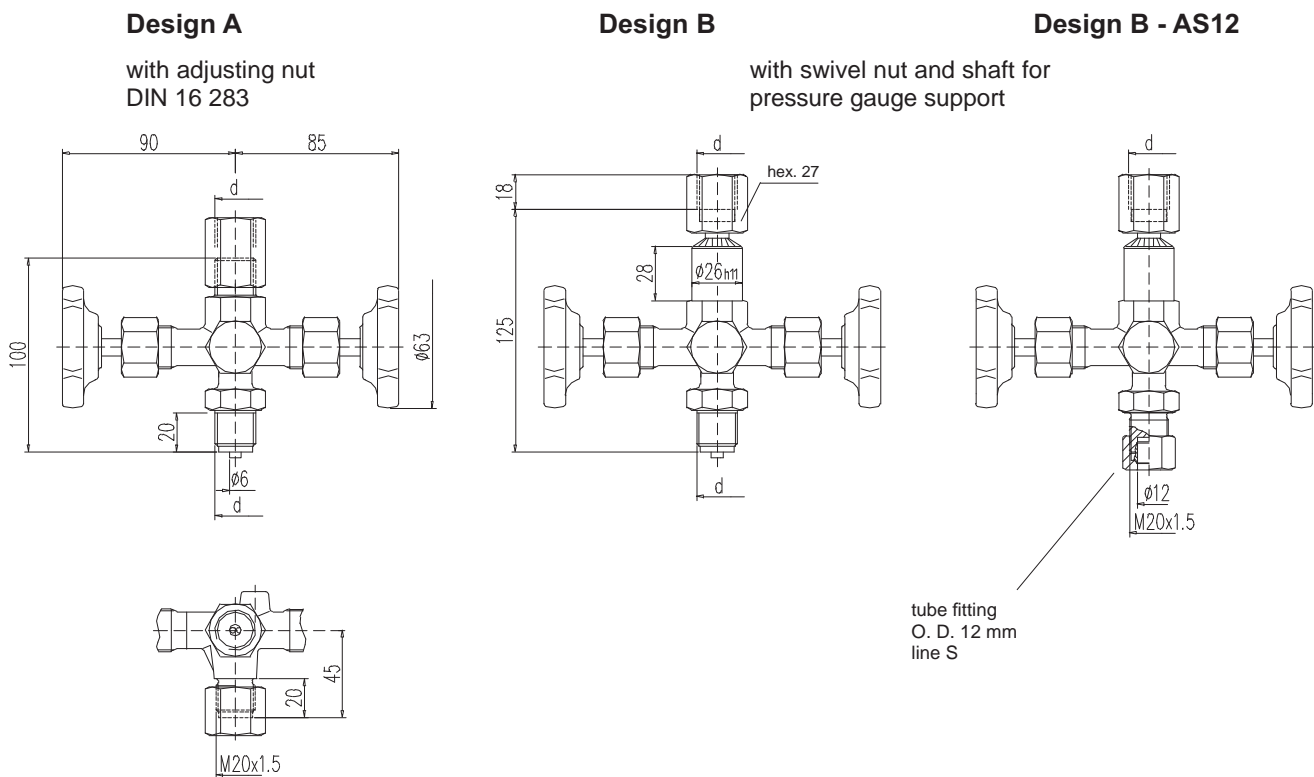


PN	Connection thread d	Material	Part no.		
			without	Type 1 with test connection M 20 x 1,5	Type 2 with
400	1/2 NPT	steel st. st.	S004.16.183 S004.16.283	S004.17.135.02 ³⁾ S004.17.235.02 ³⁾	S004.60.135.02 S004.60.235.02

Components	Steel	Stainless steel ¹⁾
	DIN - Material Number	
Body ²⁾	1.0460	1.4571
Valve stem	1.4104	1.4571
Needle tip	1.4104	1.4571
Packing	PTFE up to 200°C	
Union nut	steel	stainless steel
Vent screw	1.4571	
Handwheel	plastic	

- Body: die-pressed part
 - Surface: steel phosphatized
 - Internal stem thread
 - Stem with cold rolled surface and non-rotating needle tip
 - Valves with alternative test connections optional
- 1) Can also be supplied for oxygen service. Please notice order instruction B 3!
 - 2) Available with inspection certificate 3.1.B acc. EN 10 204
 - 3) With protecting cap and sealing lense

Pressure gauge Double Valves similar **DIN 16272**, test stud **M20x1,5**



PN ³⁾	Connection thread d	Material	Part no.		
			Design A	Design B	Design B-AS12
250 400 400	G 1/2	brass	003.4.600.0000.0	S004.60.020	S004.60.020.13
		steel	003.4.601.0000.0	S004.60.120	S004.60.120.13
		st. st.	003.4.602.0000.0	S004.60.220	S004.60.220.13
250 400 400	M 20x1,5	brass	S004.60.050	-	-
		steel	S004.60.150	-	-
		st. st.	S004.60.250	-	-

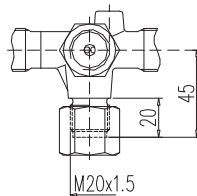
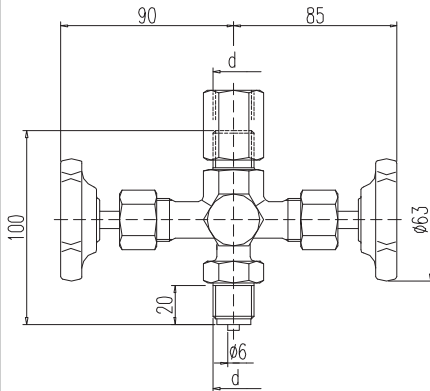
Components	Brass ¹⁾	Steel	Stainless steel ¹⁾
	DIN - Material Number		
Body ²⁾	brass	1.0460	1.4571
Valve stem	1.4104		1.4571
Needle tip	1.4104		1.4571
Packing	PTFE up to 200°C (graphite up to 250°C)		
Union nut	steel		stainless steel
Adjusting nut	steel		stainless steel
Swivel nut	brass	steel	stainless steel
Handwheel	plastic		

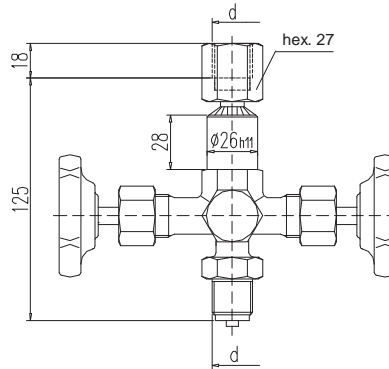
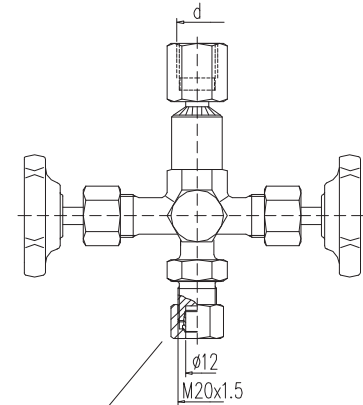
Abbreviation acc. to DIN	Material	Temperature rating
10 Ms	brass	- 10 up to + 120°C
10 St	steel	- 10 up to + 120°C
20 St	stainless steel	- 20 up to + 200/250°C

- **Body:** brass: pressed part
steel / stainless steel: die-pressed part
- **Surface:** steel phosphatized
- Internal stem thread
- Stem with cold rolled surface and non-rotating needle tip

1) Can also be supplied for oxygen service. Please notice order instruction B 3!
2) Available with inspection certificate 3.1.B acc. to EN 10 204
3) Valves with PN 640 on request


 Pressure gauge Double Valves similar **DIN 16272, test stud M20x1,5 - DVGW tested**
Design A

 with adjusting nut
 DIN 16 283

Design B

 with swivel nut and shaft for
 pressure gauge support

Design B - AS12

 tube fitting
 O. D. 12 mm
 line S

D V G W - Registration

DVGW-Register-No.

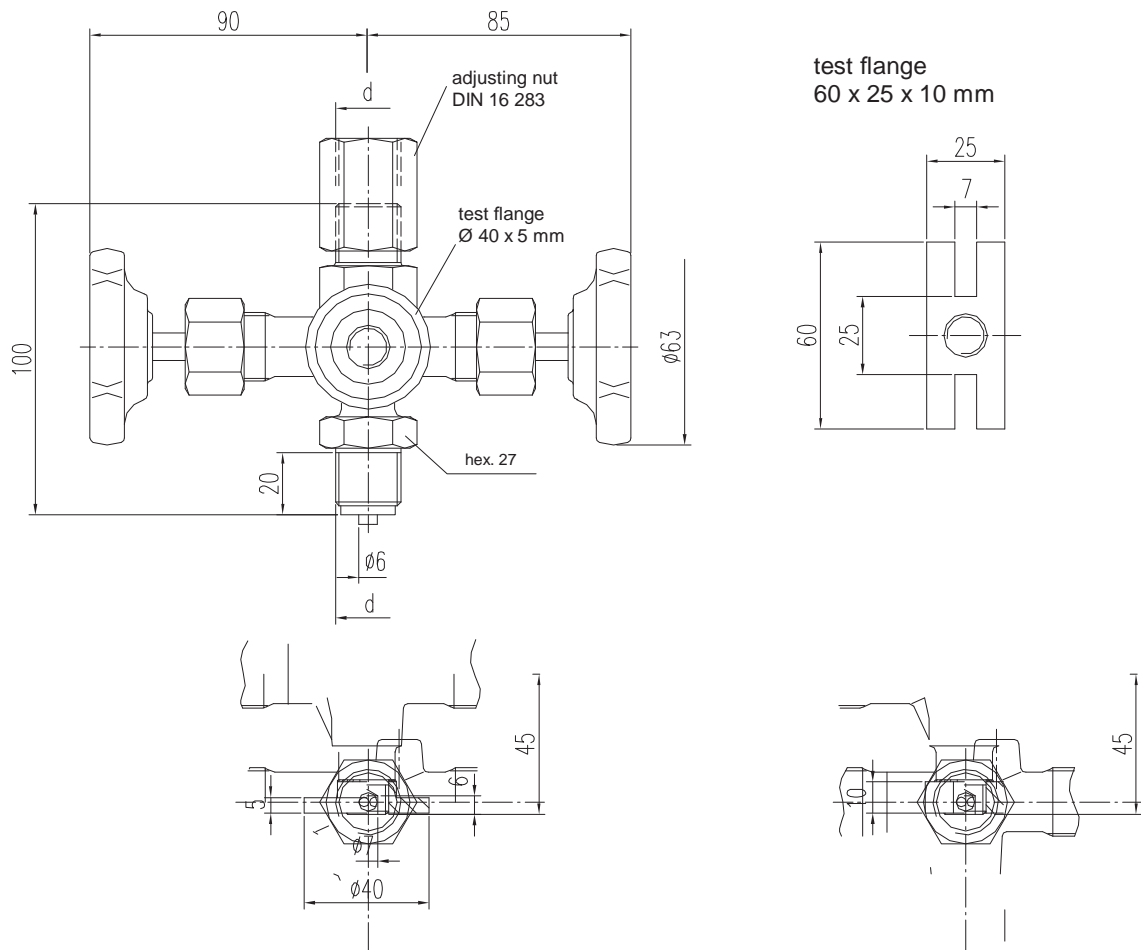
DG-4315BQ0226

PN	Connection thread d	Material	Part no.		
			Design A	Design B	Design B-AS12
100	G 1/2	brass steel st. st.	S004.80.000 S004.80.100 S004.80.200	S004.80.020 S004.80.120 S004.80.220	- S004.80.120.13 S004.80.220.13

Components	Brass	Steel	Stainless steel
	DIN - Material Number		
Body	brass	1.0460	1.4571
Valve stem	1.4104		1.4571
Needle tip	1.4104		1.4571
O-rings	FPM (Viton®)		
O-ring retainer	brass		1.4571
Union nut	galv. steel	steel	stainless steel
Swivel nut	brass	steel	1.4571
Adjusting nut	brass	steel	stainless steel
Handwheel	plastic		

- Body: brass: pressed part
steel / stainless steel: die-pressed part
- Surface: steel phosphatized
- Internal stem thread
- Stem with colled rolled surface and non-rotating needle tip
- Max. operating pressure: 100 bar
Temperature: - 5°C up to + 60°C
- Basis of type examination: DVGW VP 308
- For all kinds of gas in accordance with DVGW-list number G 260
- Available with inspection certificate 3.1 acc. to EN 10 204

Pressure gauge Double Valves similar **DIN 16272, test flange**



PN	Connection thread d	Material	Part no. with test flange	
			Ø 40 x 5 mm	60 x 25 x 10 mm
250	G 1/2	brass	003.4.620.0000.0	003.4.610.0000.0
400		steel	003.4.621.0000.0	003.4.611.0000.0
400		st. st.	003.4.622.0000.0	003.4.612.0000.0

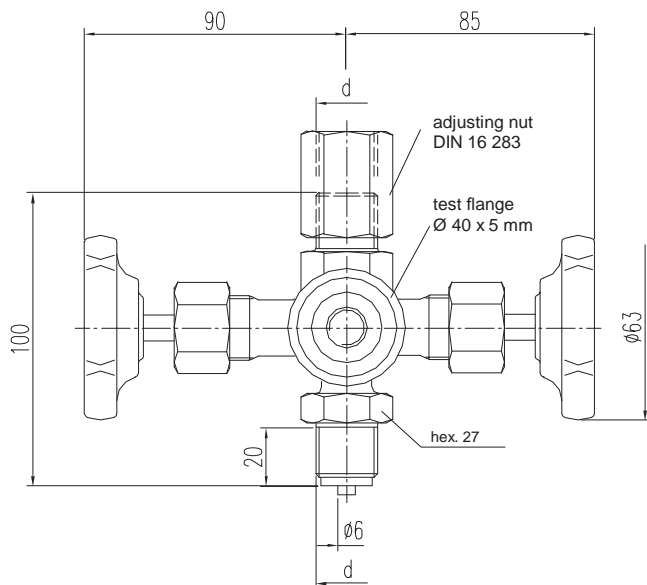
Components	Brass ¹⁾	Steel	Stainless steel ¹⁾
	DIN - Material Number		
Body ²⁾	brass	1.0460	1.4571
Flange	brass	steel	1.4571
Valve stem	1.4104		1.4571
Needle tip	1.4104		1.4571
Packing	PTFE up to 200°C		
Union nut	steel	stainless steel	
Adjusting nut	steel	stainless steel	
Handwheel	plastic		

- **Body:** brass: pressed part
steel / stainless steel: die-pressed part
- **Surface:** steel phosphatized
- Internal stem thread
- Stem with cold rolled surface and non-rotating needle tip

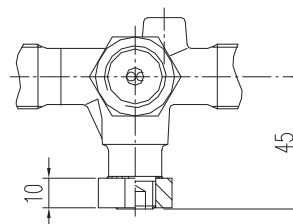
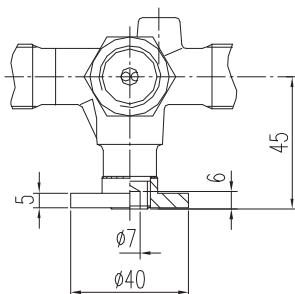
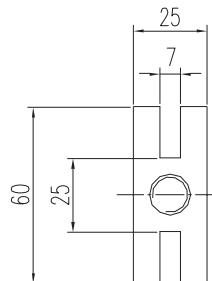
- 1) Can also be supplied for oxygen service. Please notice order instruction B 3!
- 2) Available with inspection certificate 3.1 acc. to EN 10 204



Pressure gauge Double Valves similar DIN 16272, test flange - DVGW tested



test flange
 60 x 25 x 10 mm



D V G W - Registration

DVGW-Register-No. DG-4315BQ0226

PN	Connection thread d	Material	Part no. with test flange	
			Ø 40 x 5 mm	60 x 25 x 10 mm
100	G 1/2	brass steel st. st.	S004.82.000 S004.82.100 S004.82.200	S004.81.000 S004.81.100 S004.81.200

Components	Brass	Steel	Stainless steel
	DIN - Material Number		
Body	brass	1.0460	1.4571
Flange	brass	steel	1.4571
Valve stem	1.4104		1.4571
Needle tip	1.4104		1.4571
O-rings	FPM (Viton®)		
O-ring retainer	brass		1.4571
Union nut	galv. steel	steel	stainless steel
Adjusting nut	brass	steel	stainless steel
Handwheel	plastic		

- **Body:** brass: pressed part
 steel / stainless steel: die-pressed part
- **Surface:** steel phosphatized
- Internal stem thread
- Stem with cold rolled surface and non-rotating needle tip
- Max. operating pressure: 100 bar
 Temperature: - 5°C up to + 60°C
- Basis of type examination: DVGW VP 308
- For all kinds of gas in accordance with DVGW-list number G 260
- Available with inspection certificate 3.1 acc. to EN 10 204

Gummischutzkappen schützen Manometer vor Stoß-, Schlag-, Korrosions- und Witterungseinflüssen.

- Für eine längere Lebensdauer von Manometern.
- Für Manometer mit radialem und rückseitigem Anschluss.
- Einfache Montage.

Die Gummischutzkappen werden vor der Montage dem Manometer einfach aufgestülpt.

Form:

Die äußere glatte Fläche ist durch Gummiwülste unterbrochen, die innere Fläche ist gerillt. Aufgrund der i.d.R. offenen Rückwand sind die Kappen sowohl für Manometer mit radialem Anschluss unten als auch hinten verwendbar. Sicherheitsfunktionen bei Geräten nach EN 562 werden nicht eingeschränkt.



Nenngrößen:

NG 63, NG 80, NG 100 (andere auf Anfrage)

Werkstoff:

Gummi

Rubber protection caps are protecting pressure gauges against shocks, impacts, corrosion and atmospheric influences.

- *Longer service life of pressure gauges*
- *For radial and back entry pressure gauges*
- *Easy mounting*

The rubber cap must be fitted prior to assembly of the pressure gauge.

Nominal size:

DS 63, DS 80 and DS 100 (others on request)

Material:

Rubber compound



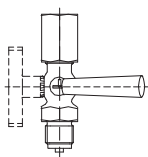
Manometer-Gummischutzkappen / Rubber protection caps		Artikel-Nummer Order-Code
Farbe / color	für NG / for DS	
Blau / blue	Anschl. unten+hinten, NG 63	003.1.063.0001.0
Blau / blue	Anschl. unten+hinten, NG 80	003.1.080.0001.0
Blau / blue	Anschl. unten+hinten, NG 100 (nur für tiefe Gehäuseausführung)	003.1.100.0001.0
Schwarz / black	Anschl. unten, NG 100 (nur für flache Gehäuseausführung)	003.1.100.0002.0

Pressure Gauge Cocks male/female (adjusting nut)

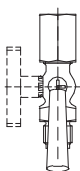
Rel. 20180702

Type	Connection thread	PN	Material	Part no.	Remarks
<p>DIN 16 262-B</p>	G 1/4	6	brass	003.2.000.0000.0	
<p>DIN 16 262-A</p>	G 1/2	25	brass steel stainless steel	003.3.000.0000.0 003.3.010.0000.0 003.3.020.0000.0	
<p>DIN 16 263-A</p>	G 1/2	25	brass steel stainless steel	003.3.310.0000.0 003.3.311.0000.0 003.3.312.0000.0	with test connection M 20 x 1,5 and protecting cap D DIN 16 287
	G 1/2	25	brass steel stainless steel	003.3.360.0000.0 003.3.361.0000.0 003.3.362.0000.0	with test flange 60 x 25 x 10 mm
	G 1/2	25	brass	003.3.800.0000.0	with test flange Ø 40 x 5 mm

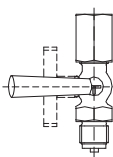
The operating positions are engraved on the plug:



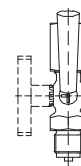
vent



operate



purge



test
(only cock with test connection)

- Range of application:

For liquids, gas or steam, from - 10°C up to + 50°C
For pressure gauges with sealing washer according to DIN 16 258

- Plastic handle

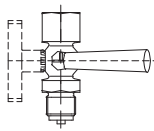
- **Please note:** The types made of brass have an adjusting nut and a protecting cap made of phosphatized steel.



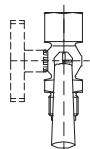
Pressure Gauge Cocks male/female

Type	Connection thread	PN	Material	Part no.	Remarks
	G 1/4	6	brass	003.2.700.0000.0	
	G 3/8	16	brass	003.5.900.0000.0	
DIN 16 261-B 	G 1/2	25	brass	003.1.500.0000.0	
	G 1/2	25	stainless steel	003.1.520.0000.0	
	G 1/2	25	brass	003.1.700.0000.0	with test flange 60 x 25 x 10 mm
	G 1/2	25	brass	003.4.700.0000.0	with test flange Ø 40 x 5 mm

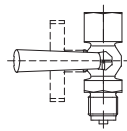
The operating positions are engraved on the plug:



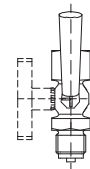
vent



operate



purge



test
(only cock with
test connection)

- Range of application:

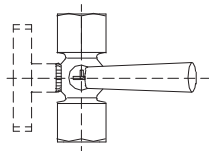
For liquids, gas or steam, from - 10°C up to + 50°C
For pressure gauges with sealing washer according to DIN 16 258

- Plastic handle

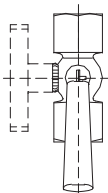
Pressure Gauge Cocks **female/female**

Type	Connection thread	PN	Material	Part no.	Remarks
	G 1/4	6	brass	003.2.400.0000.0	
	G 3/8	16	brass	003.5.800.0000.0	
DIN 16 261-A 	G 1/2	25	brass	003.1.300.0000.0	
	G 1/2	25	stainless steel	003.1.320.0000.0	
	G 1/2	25	brass	003.1.600.0000.0	with test flange 60 x 25 x 10 mm
	G 1/2	25	brass	003.0.460.0000.0	with test flange Ø 40 x 5 mm

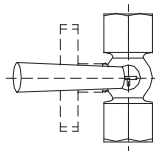
The operating positions are engraved on the plug:



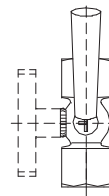
vent



operate



purge



test
(only cock with
test connection)

- Range of application:

For liquids, gas or steam, from - 10°C up to + 50°C

For pressure gauges with sealing washer according to DIN 16 258

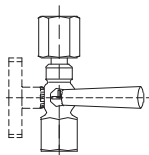
- Plastic handle



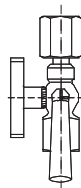
Pressure Gauge Cocks male/female (swivel nut)

Type	Connection thread	PN	Material	Part no.	Remarks
	G 1/2	25	brass	003.1.900.0000.0	
	G 1/2	25	brass	003.1.400.0000.0	with test flange 60 x 25 x 10 mm
	G 1/2	25	brass	003.2.200.0000.0	
	G 1/2	25	brass	003.1.800.0000.0	with test flange 60 x 25 x 10 mm

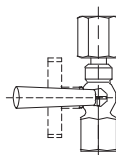
The operating positions are engraved on the plug:



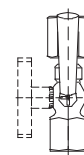
vent



operate



purge



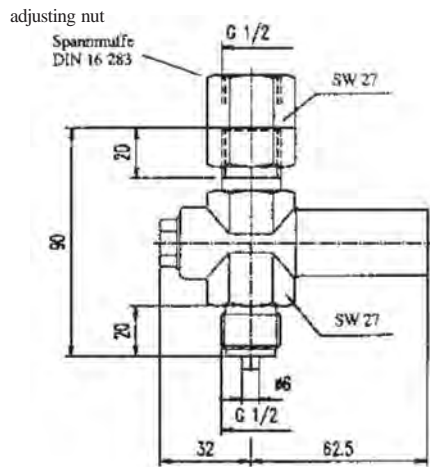
test
(only cock with
test connection)

- Range of application:

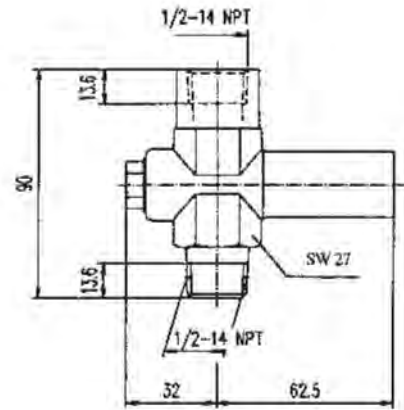
For liquids, gas or steam, from - 10°C up to + 50°C
 For pressure gauges with sealing washer according to DIN 16 258

- Plastic handle

Overpressure protection type 3.22 for pressure measuring instruments



Construction 1



Construction 2

Construction		Material	Adjustable Range in bar					
			0.4...2.5	2...6	5...25	20...60	50...250	240...400
Connection		Type-Numbers						
1	1/2" BSP	Brass 1.4571	005.50.001	005.50.002	005.50.003	005.50.004	005.50.005	005.50.006
			005.50.201	005.50.202	005.50.203	005.50.204	005.50.205	005.50.206
2	1/2-14 NPT	Brass 1.4571	005.50.031	005.50.032	005.50.033	005.50.034	005.50.035	005.50.036
			005.50.231	005.50.232	005.50.233	005.50.234	005.50.235	005.50.236

Max. Pressure Rating: Material Brass: 600 bar. Material st.st. 1.4571: 1000 bar.

Operating Temperature: Max. +80°C

CONSTRUCTIONS

Brass: Body of brass (MS 58), piston in st.st. 1.4571, LH/RH union in carbon steel, black finished, sealing rings in FKM (Viton).

Stainless steel: Body in forged st.st. 1.4571, piston and LH/RH union in st.st. 1.4571, sealing rings in FKM (Viton).

Service intended: Overpressure protectors are intended to protect the pressure gauge against the effect of pressure that exceed the maximum pressure rating of the pressure gauge. Next to providing protection at faulty process conditions, the overpressure protector may also be used to isolate low pressure indicators at a system that requires to alternatively read very low and rather high pressures.

Operating principle: An adjustable spring-loaded piston operates a shut-off device once the system pressure exceeds a pre-set value. The pressure gauge remains isolated up to the maximum pressure rating of the protector. The device re-opens and sets the pressure gauge operative, once the pressure falls appr. 25% below the pre-set value.

Options: Connection M20x1.5
Degreased construction for oxygen in st.st. 1.4571 (suitable for pressure max. 50 bar and temperature max. +60°C). In this case you have to add "FO" to the above mentioned Type-Numbers.
Stainless steel construction on request with test certificate according to EN 10 204 - 3.1B.



Gewindeadapter aus Messing (PN 400 bar) Muffe / Zapfen
 Threaded adapters in brass (PN 400 bar)

Innengewinde Female thread	Außengewinde Male thread	Artikel-Nummer Order-Code
G 1/8 = 1/8" BSP F	G 1/4 = 1/4" BSP M	003.0.000.0924.0
	G 1/8 = 1/8" BSP M	003.0.000.0215.0
	M 10 x 1	003.0.000.0931.0
	M 12x1,5	003.0.000.0240.0
	1/4" NPT M	003.0.000.0100.0
G 1/4 = 1/4" BSP F	G 3/8 = 3/8" BSP M	003.0.000.0223.0
	G 1/2 = 1/2" BSP M	003.0.000.0231.0
	1/2" NPT M	003.0.000.0101.0
	Schlauch 4 mm	999.0.000.0005.0
	7/16-20 UNF	-
G 3/8 = 3/8" BSP F	G 1/4 = 1/4" BSP M	003.0.000.0258.0
	G 1/2 = 1/2" BSP M	003.0.000.0266.0
	G 1/4 = 1/4" BSP M	003.0.000.0274.0
G 1/2 = 1/2" BSP F	G 3/8 = 3/8" BSP M	003.0.000.0282.0
	M 20x1,5	003.0.000.0312.0
	1/4" NPT M	003.0.000.0930.0
M20 x 1,5	G 1/2 = 1/2" BSP M	003.0.000.0355.0
1/4" NPT F	G 1/4 = 1/4" BSP M	003.0.000.0999.0



Gewindeadapter aus Edelstahl 1.4571 (PN 1000 bar) Muffe / Zapfen
 Threaded adapters in stainless steel 1.4571 (PN 1000 bar)

Innengewinde Female thread	Außengewinde Male thread	
G 1/8 = 1/8" BSP F	G 1/2 = 1/2" BSP M	VA-ADAPTER-G18-G12
	G 3/8 = 3/8" BSP M	VA-ADAPTER-G14-G38
G 1/4 = 1/4" BSP F	G 1/2 = 1/2" BSP M	VA-ADAPTER-G14-G12
	1/4" NPT M	VA-ADAPTER-G14-N14
	3/8" NPT M	VA-ADAPTER-G14-N38
G 3/8 = 3/8" BSP F	G 1/2 = 1/2" BSP M	VA-ADAPTER-G38-G12
	G 1/4 = 1/4" BSP M	003.0.000.0483.0
G 1/2 = 1/2" BSP F	G 3/8 = 3/8" BSP M	VA-ADAPTER-G12-G38
	1/2" NPT M	003.0.006.4923.0
M20 x 1,5	G 1/2 = 1/2" BSP M	VA-ADAPTER-M20-G12
1/4" NPT F	G 1/4 = 1/4" BSP M	VA-ADAPTER-N14-G14
	G 1/2 = 1/2" BSP M	VA-ADAPTER-N14-G12
1/2" NPT F	G 1/2 = 1/2" BSP M	VA-ADAPTER-N12-G12








Gewindeadapter aus Edelstahl 1.4571 (PN 1000 bar) Zapfen/Zapfen
 Threaded adapters in stainless steel 1.4571 (PN 1000 bar)

Außengewinde Male thread	Außengewinde Male thread	
G 1/4 = 1/4" BSP M	G 1/2 = 1/2" BSP M	VA-ADAPTER-G14M-G12M
	1/4" NPT M	VA-ADAPTER-G14M-N14M



Selbstdichtende Reduzierschraubungen aus Messing (PN 400)
 nur für Manometer-Typen S.01, NG 40/50/52/60/63 und 72x72
 sowie Typen S.02, NG 80 und NG 100 geeignet.

Innengewinde Female thread	Außengewinde Male thread	
G 1/8 = 1/8" BSP F	G 1/4 = 1/4" BSP M	003.0.000.0076.0
G 1/4 = 1/4" BSP F	G 3/8 = 3/8" BSP M	003.0.000.0084.0
	G 1/2 = 1/2" BSP M	003.0.000.0092.0

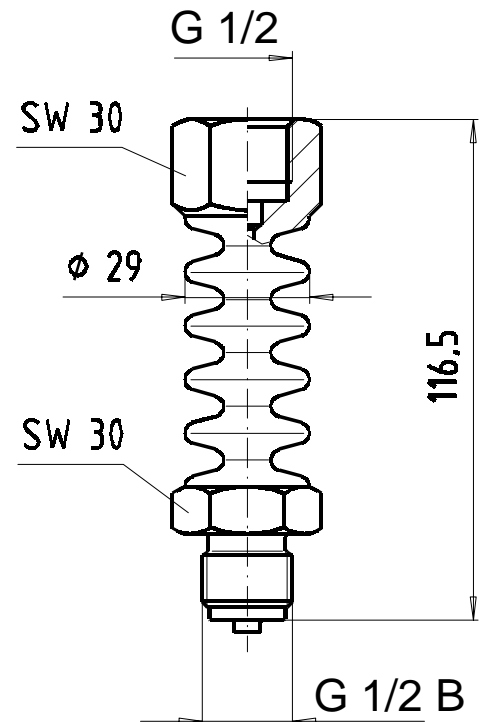
	Manometer-Profildichtringe für Innenzentrierung durch Zentrierzapfen nach EN 837-1 / Profil-gaskets for pressure gauges		Artikel-Nummer Order-Code
	Material	für Gewinde / for thread	
	Kupfer / copper	G 1/8	003.0.000.0700.0
		G 1/4 , M 12x1,5	003.0.000.0800.0
		G 1/2 , G 3/8 , M 20x1,5	003.0.000.0819.0
Aluminium	G 1/4 , M 12x1,5	003.0.000.0797.0	
	Manometer-Flachdichtungen aus PTFE (DIN 16258) Flat Gaskets in PTFE for pressure gauges		
	0,5 mm dick	für Gewinde G 1/4	003.0.000.2080.0
	0,5 mm dick	für Gewinde G 1/2 und M 20x1,5	003.0.000.0173.0
	2,0 mm dick	für Gewinde G 1/2 und M 20x1,5	003.0.000.0505.0
	Manometer-Flachdichtungen aus Nickel (DIN 16258) Flat gaskets in Nickel for pressure gauges		
	DIN 16258, aus Nickel, für Gewinde G 1/2 und M 20 x 1,5		003.0.000.0467.0
	Manometer-Flachdichtungen aus Kupfer (DIN 16258) Flat gaskets in copper for pressure gauges		
	DIN 16258, aus Kuper, für Gewinde G 1/2 und M 20 x 1,5		003.0.000.0440.0
	Manometer-Flachdichtungen aus NP uni (DIN 16258) Flat gaskets in NP uni for pressure gauges		
	DIN 16258, aus NP uni, für Gewinde G 1/2 und M 20 x 1,5		003.0.000.0459.0

Kühl-Strecke / Kühlelement für Druckmessgeräte

Werkstoff: Edelstahl
Maximaler Nenndruck: 400 bar
Maximale Nenntemperatur: +250/C

Bei hohen Mediumtemperaturen sollte zwischen Druckentnahmestelle und Druckmessgerät eine Kühlstrecke bzw. ein Kühlelement eingebaut werden.

Das Kühlelement KST bewirkt bedingt durch Luftzirkulation und Wärmeabstrahlung eine Kühlung und geringere Erwärmung des Druckmediums im und am Druckmessgerät. Erhöhte Mediumtemperaturen können zu einer Verfälschung der Messwerte und zum Ausfall des Druckmessgerätes führen.



Cooling Tower for pressure instruments

Material: stainless steel
Maximal nominal pressure: 400 bar
Maximal nominal temperature: +250/C

Intended to protect the pressure instrument from high process temperature. Air circulation through the perforated capillary protector reduces the temperature of the pressure medium.

The cooling tower is recommended with directly mounted instruments at process temperatures in excess of 100/C.

Due to circulating air and thermal radiation the cooling element leads to cooling and smaller heating up of the pressure media in and at the pressure instrument. Increased medium temperature can lead to a falsification of the measured values and to the failure of the pressure instrument.

Архангельск (8182)63-90-72
Астана (7172)727-132
Астрахань (8512)99-46-04
Барнаул (3852)73-04-60
Белгород (4722)40-23-64
Брянск (4832)59-03-52
Владивосток (423)249-28-31
Волгоград (844)278-03-48
Вологда (8172)26-41-59
Воронеж (473)204-51-73
Екатеринбург (343)384-55-89
Иваново (4932)77-34-06

Ижевск (3412)26-03-58
Иркутск (395)279-98-46
Казань (843)206-01-48
Калининград (4012)72-03-81
Калуга (4842)92-23-67
Кемерово (3842)65-04-62
Киров (8332)68-02-04
Краснодар (861)203-40-90
Красноярск (391)204-63-61
Курск (4712)77-13-04
Липецк (4742)52-20-81

Магнитогорск (3519)55-03-13
Москва (495)268-04-70
Мурманск (8152)59-64-93
Набережные Челны (8552)20-53-41
Нижний Новгород (831)429-08-12
Новокузнецк (3843)20-46-81
Новосибирск (383)227-86-73
Омск (3812)21-46-40
Орел (4862)44-53-42
Оренбург (3532)37-68-04
Пенза (8412)22-31-16

Пермь (342)205-81-47
Ростов-на-Дону (863)308-18-15
Рязань (4912)46-61-64
Самара (846)206-03-16
Санкт-Петербург (812)309-46-40
Саратов (845)249-38-78
Севастополь (8692)22-31-93
Симферополь (3652)67-13-56
Смоленск (4812)29-41-54
Сочи (862)225-72-31
Ставрополь (8652)20-65-13

Сургут (3462)77-98-35
Тверь (4822)63-31-35
Томск (3822)98-41-53
Тула (4872)74-02-29
Тюмень (3452)66-21-18
Ульяновск (8422)24-23-59
Уфа (347)229-48-12
Хабаровск (4212)92-98-04
Челябинск (351)202-03-61
Череповец (8202)49-02-64
Ярославль (4852)69-52-93

Киргизия (996)312-96-26-47

Россия (495)268-04-70

Казахстан (772)734-952-31